

A-908 CONVENTIONAL SPRAY GUN

NOZZLE SIZING - A-908

There are 3 different basic sizes of fluid nozzle available:

Material being sprayed

Clear lacquers, thin stains, 1.2 mm diameter (.047")
most industrial enamels, automotive paints.

Color or high build lacquers, metal primers, ... 1.8 mm diameter (.071")
semi gloss oil paints, other moderate viscosity products... (standard)

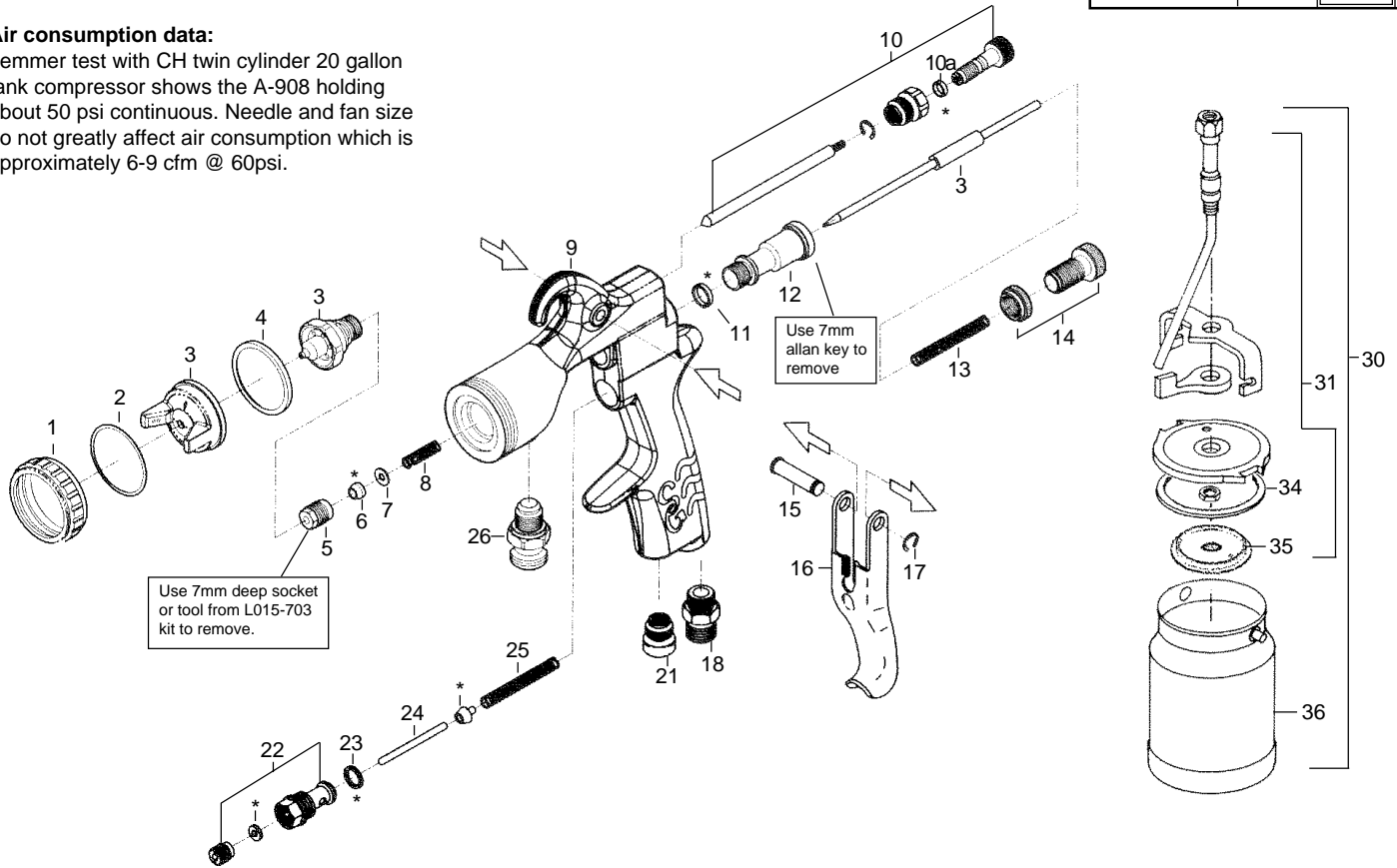
Latex and oil paints, multicolor, primers. 2.5 mm diameter (.098")

Nozzle chart

Material	1.2 mm	1.8 mm	2.5 mm
clear finishes (up to 20 sec)	best	ok	no
colour finishes (20 - 40 sec)	ok	best	ok
multicolour & heavy latex (40+ sec)	no	no	best

Air consumption data:

Lemmer test with CH twin cylinder 20 gallon tank compressor shows the A-908 holding about 50 psi continuous. Needle and fan size do not greatly affect air consumption which is approximately 6-9 cfm @ 60psi.



Pos.	Part nos.	Description	Qty.
	L015-015	A-908S spray gun w/cup 1.8mm	
	L015-016	A-908S spray gun w/cup 2.5mm	
1	L015-350	Air cap ring, A908	1
2	L015-351	Flat teflon ring, A908 air cap	1
3	L015-353	A908, 1.2 needle/seat/cap kit	1
	L015-354	A908, 1.8 needle/seat/cap kit	1
	L015-372	A908, 1.4 needle/seat/cap kit	1
	L015-355	A908, 2.5 needle/seat/cap kit	1
4	L015-861	Nylon ring inside air cap, A908/928	1
5	L015-810	Packing screw	1
* 6	L015-356	Packing	1
7	L015-812	Washer	1
8	L015-813	Spring	1
9	L015-357	Gun body, A908	1
10	L015-360	Fan control assy (A908)	1
*10a		Shaft seal (fan control) (L004-571 fits)	1
*11	L015-816	Gasket	1
12	L015-817	Bushing	1
13	L015-818	Needle spring	1
14	L015-819	Material control knob	1
15	L015-824	Trigger pin	1
16	L015-822	Trigger	1
17	L015-823	C-clip	1
18	L015-820	Air inlet fitting	1
21	L015-362	Cap	1

Pos.	Part nos.	Description	Qty.
	L015-371	Air flow control	opt
22	L015-825	Air valve seat assy	1
*		Shaft seal (air valve)	1
*23	L015-826	O-ring (alternate L004-571 HD viton)	1
24	L015-827	Air valve stem	1
*		Valve seat (air valve stem)	1
25	L015-828	Air valve spring	1
26	L015-829	Fluid inlet fitting	1
30	L015-364	Container assy, A908	1
31	L015-365	Lid assy, A908	1
34	L015-366	Container gasket	1
35	L015-367	Anti-Drip baffle (3-1/16" O.D.)	1
36	L015-368	Container only, A908	1

Accessories:

*	L015-369	Seal kit consisting of items marked " * "
	L015-849	Mini suction filter (each)
	L015-860	Mini suction filter (pkg/5)
	L015-371	Air flow control valve, replaces #21
	L015-703	Tool kit
	L015-349	Manual A-908
	Temp-E	Hose clamp to prevent rare cases of #35 anti-drip baffle from slipping down. Certain lacquers can swell the anti drip baffle and this clamp will hold the baffle in place.