

PARTS LIST & DIAGRAM

L-50 & L-50N GUN

Specifications, L-50

Maximum pressure: 5800 psi.
 Tip thread: 11/16 - 16.
 Hose connection: 1/4" nps.
 Wetted parts: Al,SS,TC,Cu,
 Brass,Tef.

To identify version, note hook on housing (7)
L-50 version: no hook
L-50N version: has hook



• Follow shut down procedure before servicing or cleaning equipment. (see #1 overleaf)

• This instruction sheet is only a supplement to your system operating instructions. Read your system manual before operating any high pressure equipment.

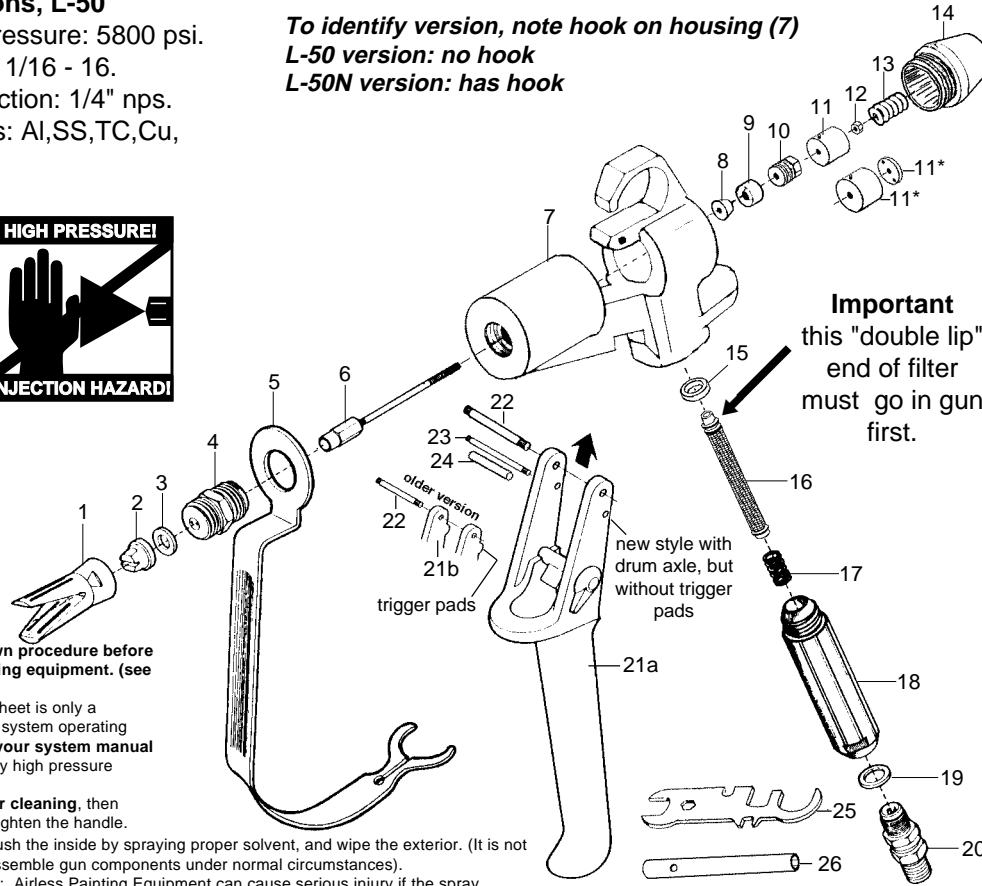
• Remove filter for cleaning, then reinstall and hand tighten the handle.

• To clean gun: flush the inside by spraying proper solvent, and wipe the exterior. (It is not necessary to disassemble gun components under normal circumstances).

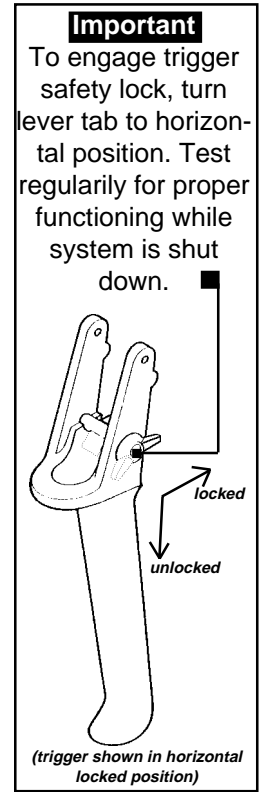
• Injection hazard: Airless Painting Equipment can cause serious injury if the spray penetrates the skin. Do not point the gun at anyone or any part of the body. The tip guard provides some protection against accidental injection injuries, but is mostly a warning device. Never put your hand, fingers or body over the spray tip. Gloves and clothing do not necessarily offer any protection either. Keep the gun trigger safety lever in locked position when not spraying. Always have the tip guard in place while spraying.

In case of penetration seek medical aid immediately! Note to physician: Injection into skin is a serious traumatic injury. It is important to treat the injury surgically as soon as possible. Do not delay treatment to research toxicity. Toxicity is a concern with some exotic coatings injected into the bloodstream. Consultation with a plastic surgeon or reconstructive hand surgeon may be advisable. Be prepared to tell the doctor what fluid was injected.

• Do not use halogenated hydrocarbon solvents in this system; it contains aluminum parts and may explode. Cleaning agents, coatings, paints, and adhesives may contain halogenated hydrocarbon solvents. Don't take chances, consult your material supplier to be sure. (ex: methylene chloride and 1,1,1 - Trichlorethane)



Important
 this "double lip" end of filter must go in gun first.



- Caution: When a flammable liquid is sprayed there may be danger of fire or explosion especially in a closed area.
- Use extreme caution when cleaning spray tip guard. DO NOT try to wipe off build up around the spray tip before following shut down procedure. Follow the Shut down Procedure, then follow the spray tip manufacturer's instructions for removing and cleaning the spray tip.
- Never attempt to change spray tip or leave the unit unattended without first shutting off pump, releasing fluid pressure, and locking the trigger safety lock.
- Conductive metal containers must be used when flushing flammable fluids through the system. Always flush at low pressure with spray tip removed. A metal part of the spray gun must be held firmly against the grounded metal pail when flushing or relieving pressure from the gun.
- Trigger guard helps reduce the risk of accidentally triggering the gun if dropped or bumped. Do not use a spray gun without a trigger guard.

Pos.	Part nos.	Description	Qty.
	L032-009	L-50 airless gun without tip nut	
1	L032-501	Tip retainer	opt.
2		tip (see separate list)	opt.
3	L043-008	Nylon washer	opt.
4	L032-503	Seat	1
5	L032-589	Trigger guard (L-45, L-50N)	1
	L032-530	Trigger guard with hook (L-50)	1
6	L032-531	Ball with shaft	1
7	L032-596	Gun body (L-50N - 20mm big bore)	1
	L032-528	Gun body (L-50N - 18mm small bore)	1
	L032-532	Gun body (L-50 - 18mm small bore)	1
8	L032-507	Wedge	1
9	L032-508	Packing	1
10	L032-533	Packing nut	1
11	L032-527	Drum, L50 gen1-18D x 17L NoPin	1
	L032-534	Drum, L50 gen2-18D x 12L NoPin	1
	L032-578*	Drum, L50N gen3-18D x 12L SelfC	1
	L032-585	Drum, L50N gen4-20D x 12L W/Pin	1
	L032-586	Drum, L50N gen5-20D x 17L W/Pin	1
	L032-597*	Drum, L50N gen6-20D x 17L SelfC	1
	L032-598*	Drum, L50N gen7-20D x 14L SelfC	1
	L032-579*	Convex brass retainer for #578&597	1
12	L032-511	Nut	1

Pos.	Part nos.	Description	Qty.
13	L032-535	Spring	1
14	L032-536	Tension knob	1
	L032-566	Tension knob (L50N)	1
15	L032-514	Handle seal	1
16	L032-516	Gun filter, white (50 mesh)	1
	L032-517	Gun filter, yellow (100 mesh)	opt.
	L032-518	Gun filter, red (200 mesh)	opt.
17	L032-519	Filter spring	1
18	L032-529	Handle, blue	1
19	L032-520	Copper seal	1
20	L032-521	Swivel, 1/4" nps (opt 3/8" 0043271)	1
21a	L032-571	Trigger complete without pads	1
21b	L032-537	Trigger complete with pads	1
22	L032-577	Trigger axle & nut ass'y, new type	1
	L032-575	Trigger axle only	
	L032-576	Trigger nut only	
	L032-523	Trigger shaft, straight pin (old type)	1
23	L032-572	Drum actuator pin, new style	1
24	L032-573	Actuator sleeve, new style	1
Accessories:			
25	L032-560	Wrench, general use	opt.
26	L032-538	Wrench, L-35/L-50 for nut #12	opt.
	L032-595	Repair kit (Incl. pos. 4,6,8,9,12,15)	

Specifications subject to change.