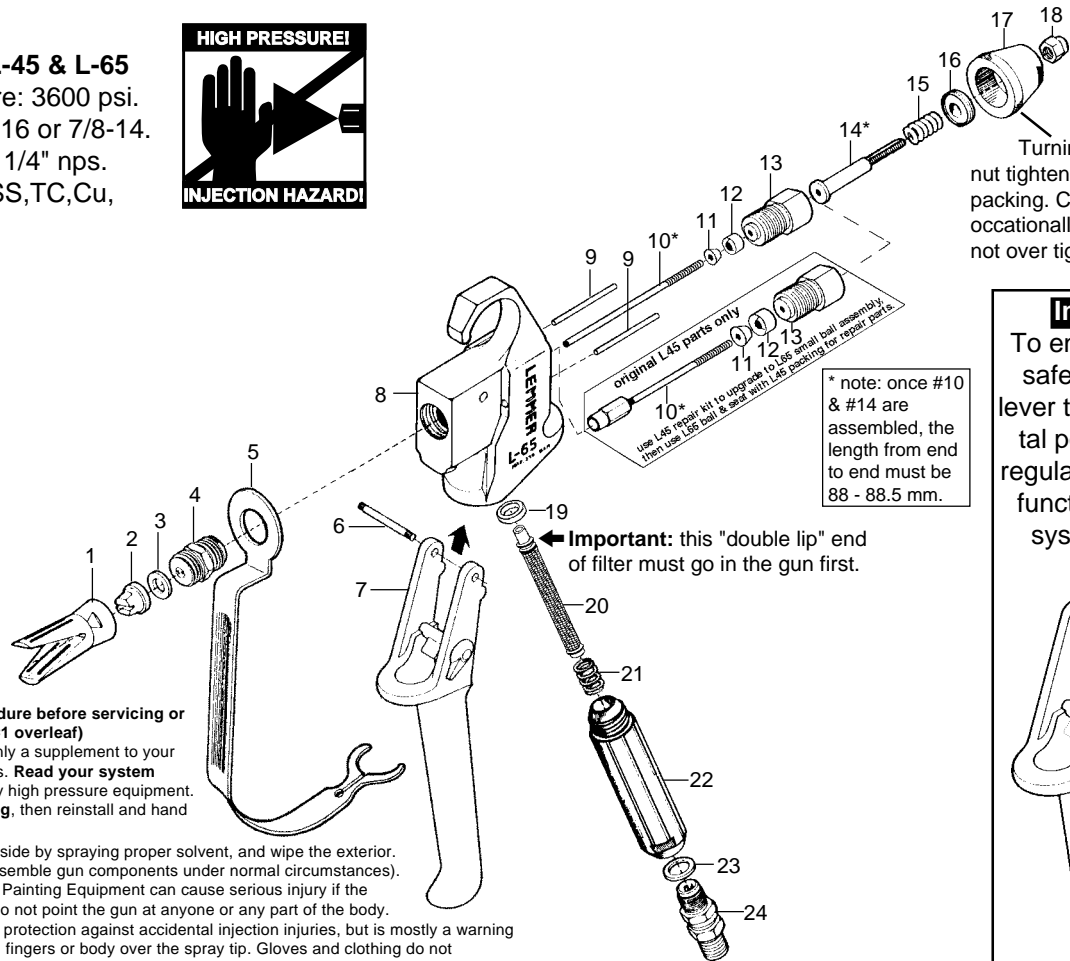


L-45 / L-65 / L67

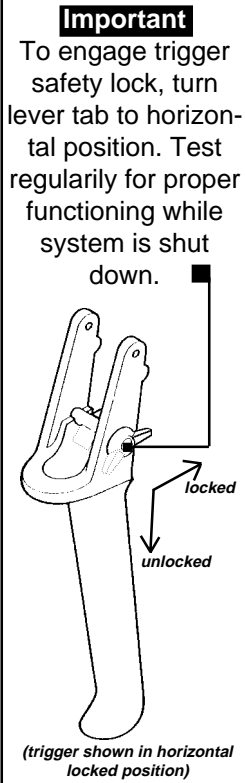
Specifications, L-45 & L-65
 Maximum pressure: 3600 psi.
 Tip thread: 11/16-16 or 7/8-14.
 Hose connection: 1/4" nps.
 Wetted parts: Al,SS,TC,Cu,
 Brass,Tef.



Turning this nut tightens the packing. Check occasionally and do not over tighten.

- Follow shut down procedure before servicing or cleaning equipment. (see #1 overleaf)
- This instruction sheet is only a supplement to your system operating instructions. Read your system manual before operating any high pressure equipment.
- Remove filter for cleaning, then reinstall and hand tighten the handle.
- To clean gun: flush the inside by spraying proper solvent, and wipe the exterior. (It is not necessary to disassemble gun components under normal circumstances).
- Injection hazard: Airless Painting Equipment can cause serious injury if the spray penetrates the skin. Do not point the gun at anyone or any part of the body. The tip guard provides some protection against accidental injection injuries, but is mostly a warning device. Never put your hand, fingers or body over the spray tip. Gloves and clothing do not necessarily offer any protection either. Keep the gun trigger safety lever in locked position when not spraying. Always have the tip guard in place while spraying.
- In case of penetration seek medical aid immediately! Note to physician: Injection into skin is a serious traumatic injury. It is important to treat the injury surgically as soon as possible. Do not delay treatment to research toxicity. Toxicity is a concern with some exotic coatings injected into the bloodstream. Consultation with a plastic surgeon or reconstructive hand surgeon may be advisable. Be prepared to tell the doctor what fluid was injected.
- Do not use halogenated hydrocarbon solvents in this system; it contains aluminium parts and may explode. Cleaning agents, coatings, paints, and adhesives may contain halogenated hydrocarbon solvents. Don't take chances, consult your material supplier to be sure. (ex: methylene chloride and 1,1,1 - Trichlorethane)
- Caution: When a flammable liquid is sprayed there may be danger of fire or explosion especially in a closed area.

Important
 To engage trigger safety lock, turn lever tab to horizontal position. Test regularly for proper functioning while system is shut down.



* note: once #10 & #14 are assembled, the length from end to end must be 88 - 88.5 mm.

- Use extreme caution when cleaning spray tip guard. DO NOT try to wipe off build up around the spray tip before following shut down procedure. Follow the Shut down Procedure, then follow the spray tip manufacturer's instructions for removing and cleaning the spray tip.
- Never attempt to change spray tip or leave the unit unattended without first shutting off pump, releasing fluid pressure, and locking the trigger safety lock.
- Conductive metal containers must be used when flushing flammable fluids through the system. Always flush at low pressure with spray tip removed. A metal part of the spray gun must be held firmly against the grounded metal pail when flushing or relieving pressure from the gun.
- Trigger guard helps reduce the risk of accidentally triggering the gun if dropped or bumped. Do not use a spray gun without a trigger guard.

Pos.	Part nos.	Description	Qty.
	L032-018	L-45 airless gun without tip nut	
	L032-030	L-65-L airless gun without tip nut	
	L032-035	L-67-G airless gun without tip nut	
1	L032-501	Tip retainer (11/16" L-thread)	opt.
	L032-710	Tip retainer (7/8" G-thread)	opt.
2		tip (see separate list)	opt.
3	L043-008	Nylon washer	1
4	L032-503	Seat, L45	1
	L032-711	Seat, L65 (11/16" L-thread)	1
	L032-712	Seat, L67 (7/8" G-thread)	1
5	L032-589	Trigger guard	1
6	L032-523	Trigger shaft	1
	L032-575	Trigger axle (new type 2006)	1
	L032-576	Axle nut (new type 2006)	2
7	L032-522	Trigger, L45	1
	L032-713	Trigger, L65 (fits all L65's when used with 1" pins)	1
	L032-720	Trigger lock assembly (req. glue)	opt.
8	L032-580	Gun body, L45	1
	L032-714	Gun body, L65	1
9	L032-591	Trigger push pin, .93" L45/L65	2
	L032-594	Trigger push pin, 1" new L65	2
10	L032-584	Ball with shaft, L45	1
	L032-715	Ball with shaft, L65	1
11	L032-593	Wedge, L45	1

Pos.	Part nos.	Description	Qty.
	L032-507	Wedge, L65/L67	1
12	L032-606	Packing, L45	1
	L032-508	Packing, L65/L67	1
13	L032-581	Housing, L45	1
	L032-716	Housing, L65	1
14	L032-582	Spring shaft	1
15	L032-588	Spring	1
16	L032-583	Housing nut	1
17	L032-587	Retainer cap	1
18	L032-590	Lock nut	1
19	L032-514	Handle seal	1
20	L032-516	Gun filter, white (50 mesh)	1
	L032-517	Gun filter, yellow (100 mesh)	opt.
	L032-518	Gun filter, red (200 mesh)	opt.
21	L032-519	Filter spring	1
22	L032-592	Handle, red	1
	L032-717	Handle, grey	1
23	L032-520	Copper seal	1
24	L032-521	Swivel, 1/4" nps (opt 3/8" 0043271)	1
Accessories:			
	L032-599	Repair kit, L-45 (4(L65),10(L65),12(L45),14,18)	
	(L032-599 kit upgrades L45 to L65 small ball & seat)		
	L032-718	Repair kit, L-65-L (4,10,12,14,18)	
	L032-719	Repair kit, L-67-G (4,10,12,14,18)	