

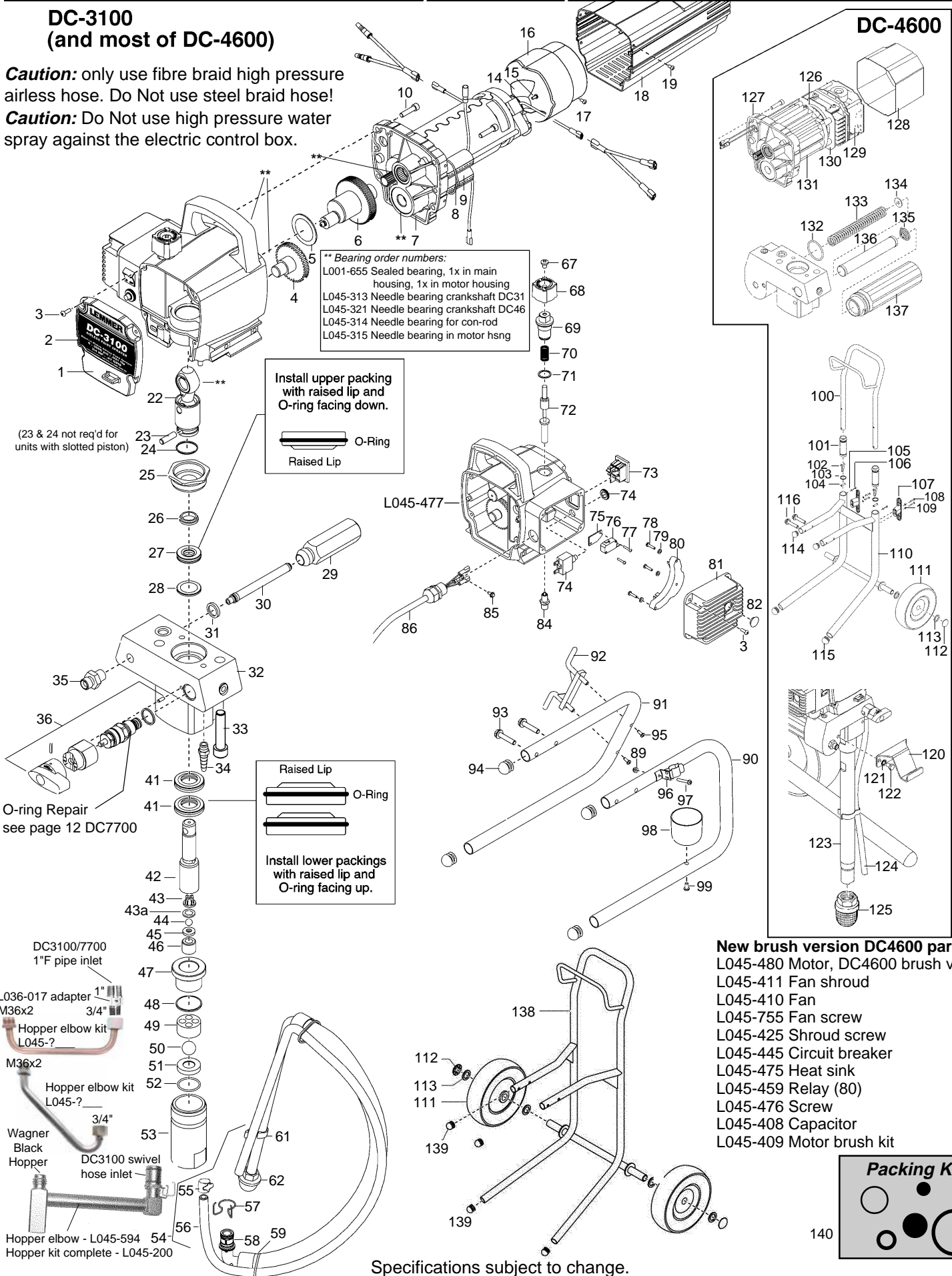
PARTS DIAGRAM

DC-3100/DC3100N / DC-4600



DC-3100 (and most of DC-4600)

Caution: only use fibre braid high pressure airless hose. Do Not use steel braid hose!
Caution: Do Not use high pressure water spray against the electric control box.



Specifications subject to change.

DC-3100/DC3100N / DC-4600

Pos.	Part nos.	Description	Qty.	Pos.	Part nos.	Description	Qty.
	L045-010	DC-3100 airless piston pump on stand		79	L045-448	Flat washer	3
	L045-011	DC-3100N airless piston pump on cart		80	L045-521	Relay, 120V (DC31 pre 2013)	1
1	L045-400	Decal, DC3100/N front cover	1	81	L046-713	Cover w/C.Board, DC31N 2019	
	L045-760	Decal, DC4600 front cover	1		L045-320	Cover w/C.Board, DC31N 2013	1
2	L045-401	Front cover	1		L045-449	Heat sink ass'y (incl. #81,82) DC31	1
3	L045-402	Screw	8		L045-492	Heat sink ass'y (incl. #81,82) DC46	1
4	L045-403	Second stage gear	1	82	L045-450	Port plug	1
5	L045-404	Thrust washer	1	84	L045-451	Transducer assembly (includes o-ring)	1
6	L045-405	Crankshaft/gear assembly	1	85	L045-452	Ground screw	1
7	L045-406	Motor assembly (#8,9,14-17)	1	86	L045-453	Power cord assembly (stand)	1
8	L013-512	Tie wrap	4		L045-454	Power cord assembly (cart)	1
9	L045-408	Capacitor	1		L045-715	Strain relief, DC45/77	opt
10	L002-818	Bolt, 1/4 x 1" NC		89	L045-455	Nut	1
14	L045-410	Fan	1	90	L045-456	Right leg assembly (incl. #94,89,96-99)	1
15	L045-755	Fan screw	1	91	L045-457	Left leg assembly (incl. #92,94,95)	1
16	L045-411	Fan shroud (half)	2	92	L045-589	Cord wrap	1
17	L045-525	Screw	2	93	L045-458	Screw	4
18	L045-412	Motor cover	1	94	L045-459	Plug	4
19	L045-413	Screw	4	95	L045-460	Screw	2
22	L045-414	Slider assembly (for piston w/pin)	1	96	L045-461	Clip assembly	1
	L045-319	Slider assembly (for slotted piston)	1	97	L045-462	Screw	1
23	L045-806	Connecting pin (for piston with hole)	1	98	L045-588	Drip cup	1
24	L045-807	Retaining ring (for slider w/pin only)	1	99	L045-463	Screw	1
25	L045-415	Retainer nut	1	100	L045-464	Handle assembly (incl. #)	1
•26	L045-416	Piston guide	1	101	L045-744	Handle sleeve	2
•27	L045-417	Upper packing	1	102	L045-743	Snap button	2
•28	L045-418	Spacer	1	103	L045-745	Handle washer	2
29	L045-419	Filter housing	1	104	L045-742	Pin	2
30	L032-516	Filter 50m push-in (pre 2019)	1	105	L045-885	Washer	6
	L046-503	Filter 30m left-threaded (2019 onward)	1	106	L045-746	Screw	4
31	L032-514	Filter seal	1	107	L045-482	Cord wrap	2
32	L045-422	Pump manifold, DC31	1	108	L045-483	Screw	4
	L045-493	Pump manifold, DC46	1	109	L045-885	Washer	6
33	L045-423	Bolt	2	110	L045-485	Cart frame, DC46 (incl 114,115)	1
34	L035-714	Return hose fitting, 1/8"	1	111	L045-749	Wheel	2
35	L045-425	Outlet fitting, 1/4"	1	112	L056-583	Cap	2
36	L045-862	PRIME/SPRAY valve assembly	1	113	L056-582	Spacer	4
•41	L045-426	Lower packing set (pack of 2)	1	114	L045-478	Plug, cart frame	2
42	L045-427	Piston rod, with pin-hole	1	115	L045-481	Plug, cart frame	2
	L045-316	Piston rod, slotted (DC3100N)	1	116	L045-484	Bolt, DC46 cart	4
	L045-316C	Piston rod, slotted w/valve (DC31N)	1	119	L045-883	Hose clip (cart only)	1
43	L045-567	Shaft valve cage (plastic-older)	1	120	L045-465	Pail hook (DC46 cart only)	1
•	L045-317	Shaft valve cage (metal, must use seal)	1	121	L045-466	Washer (cart only)	2
•43a	L045-318	Seal, shaft valve (for metal cage only)	1	122	L045-467	Screw (cart only)	2
•44	L060-519	Shaft valve ball	1	123	L045-468	Siphon tube, 1"Mx1"M filter (cart only)	1
45	L060-520	Shaft valve seat	1	124	L045-469	Return hose (cart only)	1
46	L045-428	Shaft valve retainer	1	125	L045-860	Inlet screen (cart only)	1
47	L045-429	Piston bushing	1	126	L045-486	Motor fan, DC46	1
•48	L045-430	Nylon washer	1	127	L045-487	Motor, DC46 w/front end bell	1
49	L045-431	Inlet valve cage	1	128	L045-488	Cover, electronic	1
•50	L045-432	Inlet valve ball	1	129	L045-489	Electronic control assembly	1
51	L045-433	Inlet valve seat	1	130	L045-490	Fan shroud	1
•52	L045-434	O-ring, Teflon	1	131	L045-491	Motor, DC46 w/end bell & electronics	1
53	L045-435	Inlet valve housing (stand)	1	132	L045-494	Seal, DC46 filter cap	1
	L045-436	Inlet valve housing (cart)	1	133	L045-495	Spring, DC46 filter	1
54	L046-759	Suction set assembly (was L045-437)	1	134	L045-496	Adapter, DC46 filter	1
55	L045-752	Return hose clamp	1	135	L045-497	Spring, DC46 filter	1
56	L045-438	Return hose	1	136	L045-498	Filter, DC46	1
57	L045-592	Retaining ring	1	137	L045-499	Filter housing, DC46	1
58	L045-584	O-ring	2	138	L045-311	Cart frame, DC31	1
59	L013-512	Tie wrap	2	139	L045-312	Plug, DC31	4
61	L045-581	Hose clip	1			Pump packing kit:	
62	L045-579	Inlet screen, 16 mesh	1	•140	L046-702	Pack kit,item "•"/w/o#28(DC31+DC31N2019)	
	L045-593	Inlet screen, 12 mesh	opt		L045-470	Pack kit,item "•"(DC31+DC31N2013+DC46)	
67	L045-441	Screw	1		L045-471	Lower seal insertion tool	
68	L045-442	Pressure control knob	1			Accessories:	
69	L045-443	Knob housing	1		L034-125	Packing lubricating oil, squeeze bottle	
70	L045-536	Knob spring	1		L050-621	Owner's manual	
71	L045-535	Washer	1		L045-472	Motor Brush Kit, DC31	
72	L045-444	Plunger	1		L045-473	Fluid sect compl. DC31stand (#25-32,34-53)	
73	L045-712	ON/OFF switch	1		L045-474	Fluid sect compl. DC46cart (#25-32,34-53)	
74	L045-445	Circuit breaker (DC31)	1		L045-479	Lubriplate, 5 ounce	
75	L045-446	Microswitch insulator	1		L045-200	Hopper kit for DC3100/3200	
76	L045-725	Microswitch	1		L045-594	Elbow for hopper kit	
77	L045-559	Screw	2		0154744	Anti-Seize Lubricant	
78	L045-447	Screw	3				